

BASORFIL BFR SS316L

Assembly instructions



H1 1/2"



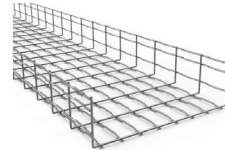
DESCRIPTION
BFR-4"x 1_1/2" SS316L
BFR-6"x 1_1/2" SS316L
BFR-8"x 1_1/2" SS316L
BFR-12"x 1_1/2" SS316L

H2"



DESCRIPTION
BFR 2"x2" SS316L
BFR 4"x2" SS316L
BFR 6"x2" SS316L
BFR 8"x2" SS316L
BFR 12"x2" SS316L
BFR 16"x2" SS316L
BFR 20"x2" SS316L
BFR 24x2" SS316L

H4"



DESCRIPTION
BFR 4"x4" SS316L
BFR 8"x4" SS316L
BFR 12"x4" SS316L
BFR 16"x4" SS316L
BFR 20"x4" SS316L
BFR 24"x4" SS316L

H6"

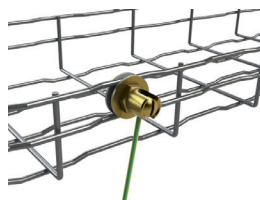


DESCRIPTION
BFR 8"x6" SS316L
BFR 12"x6" SS316L
BFR 16"x6" SS316L
BFR 20"x6" SS316L
BFR 24"x6" SS316L

BOLT&STAPLE SET



GROUND CONNECTION



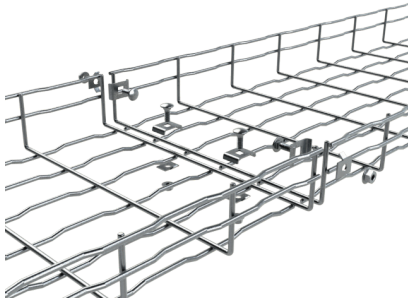
BASORFIL BFR SS316L

Assembly instructions



BOLT & STAPLE SET SS316

DESCRIPTION	SS316L		
	REF.	kg/ud	LBS/unit
BF Bolt-Staple Set	2/5358	0,023	0,05



1. Place the bolt inside the cable tray with the thread towards the outside. The slots of the head embrace the transverse rods of the trays to be joined.
2. Place the staple outside the cable tray (the threaded rod of the bolt pass through the hole of the staple) embracing the transverse rods too and the head of the bolt.
3. Apply a 6 Nm Torque with the nut.

Pieces needed per model:

MODEL		WINGS	BASE (CENTERED)
100x35	4"x1 1/2"	2	2
150x35	6"x1 1/2"	2	2
200x35	8"x1 1/2"	2	2
300x35	12"x1 1/2"	2	2
60x65	2"x2"	2	2
100x65	4"x2"	2	2
150x65	6"x2"	2	2
200x65	8"x2"	2	2
300x65	12"x2"	2	2
400x65	16"x2"	2	2
450x65	18"x2"	2	2
500x65	20"x2"	2	2
600x65	24"x2"	2	2
100x105	4"x4"	2	2
200x105	8"x4"	2	2
300x105	12"x4"	2	2
400x105	16"x4"	2	2
450x105	18"x4"	2	2
500x105	20"x4"	2	2
600x105	24"x4"	2	2
200x150	8"x6"	2	2
300x150	12"x6"	2	2
400x150	16"x6"	2	2
450x150	18"x6"	2	2
500x150	20"x6"	2	2
600x150	24"x6"	2	2

BASORFIL BFR SS316L

Assembly instructions

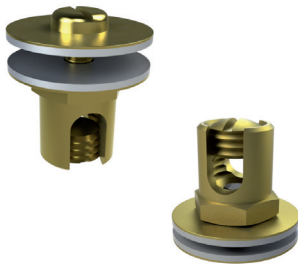


GROUND CONNECTION

To comply with NEC specifications to use BFR/BF2R/E-BFR wire-mesh cable trays as ground conductor, the following models are supplied with ground connection clamps and with an additional ground connection wire 10AWG:

GROUND CONNECTION CLAMP

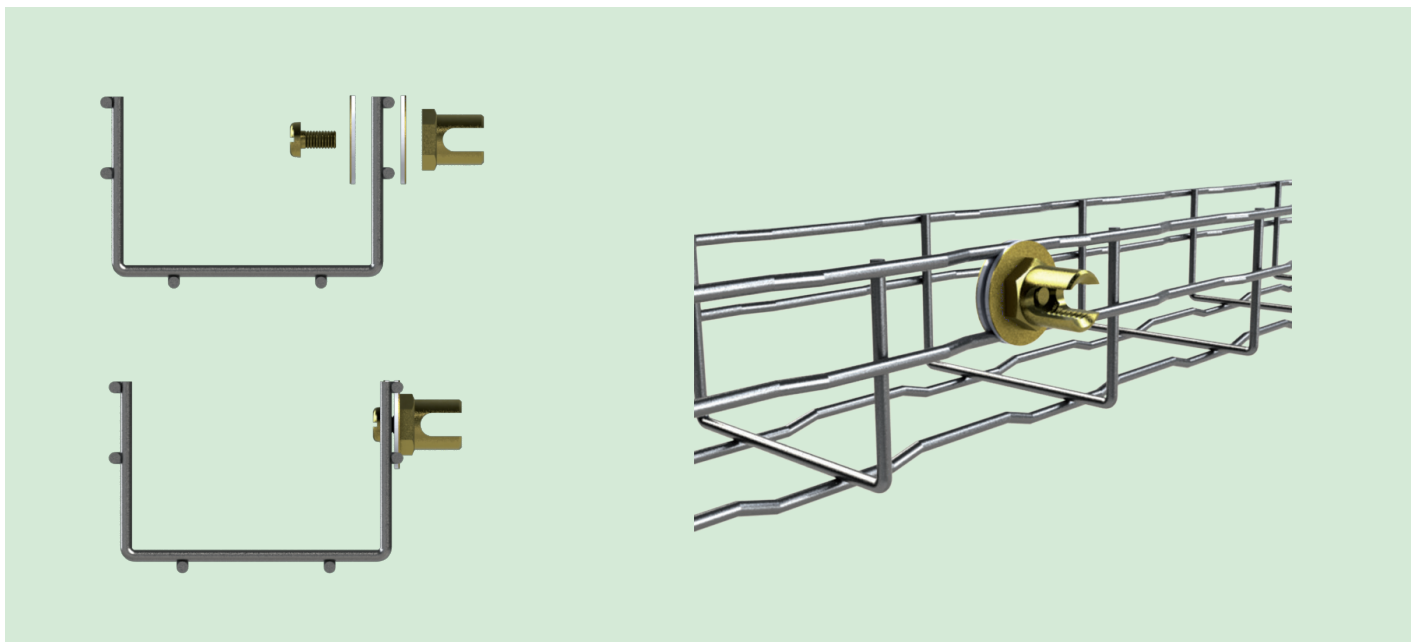
DESCRIPTION	Smax		BRASS		
	inch2	mm2	REF.	kg/ud	LBS/unit
GCC 35 M6x0,47"	0,054	35	2/6796	0,04	0,088
GCC 95 M6x0,47"	0,147	95	2/6797	0,07	0,154



WIDTH		HEIGHT	
(mm)	inch	(mm)	inch
100	4"	35	1" 1/2
150	6"	35	1" 1/2
200	8"	35	1" 1/2
300	12"	35	1" 1/2
60	2"	65	2"
100	4"	65	2"
150	6"	65	2"
200	8"	65	2"
100	4"	105	4"

To assembly the clamps and wires to a tray of 2", 4" of 6" follow these steps:

- Place the ground clamp with the two washers hugging the two wires of the wing of the tray applying 4 Nm torque.

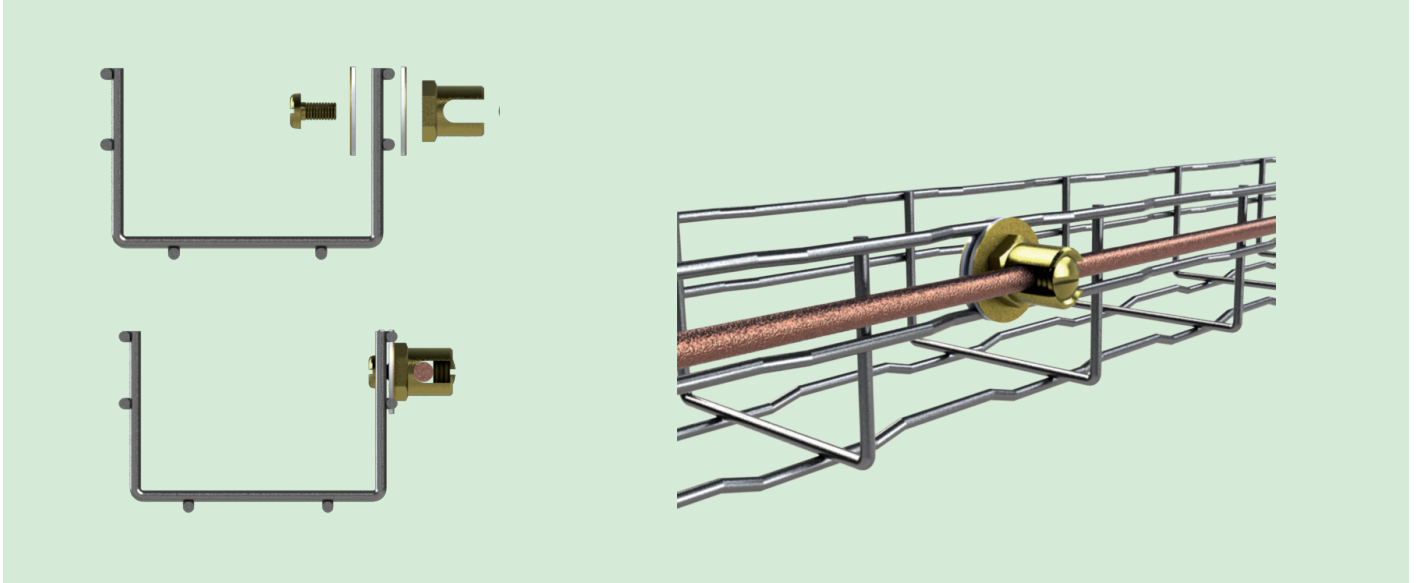


BASORFIL BFR SS316L

Assembly instructions



- b. Place one ground clamp as shown every 3 m / 10 ft (one ground clamp per wire-mesh cable tray piece)
- c. Introduce the ground wire into the hole of the ground clamp and make pressure with the rounded nut (4 Nm torque).



To assembly the clamps and wires to a tray of 1_1/2 inches height (only one wire in the wing) follow the same steps but hugging two rods of the base of the tray and adding 2 SSC support pieces between the tray and the ground clamp washers as shown in the following pictures:

